

# OPHTHALMOLOGY

MR STEPHEN C LASH

BM, BSc(HONS), MCOPTOM, FRCOPHTH, MBA

CONSULTANT OPHTHALMOLOGIST

UNIVERSITY HOSPITAL SOUTHAMPTON

TARGET JANUARY 22 2014

16/3/2011



# OUTLINE

---

- The Eye
- History
- Examination
- Ophthalmoscopy
- Coral snakes and king snakes
- The clinic



# THE EYE

---

- You see what you look for and you look for what you know

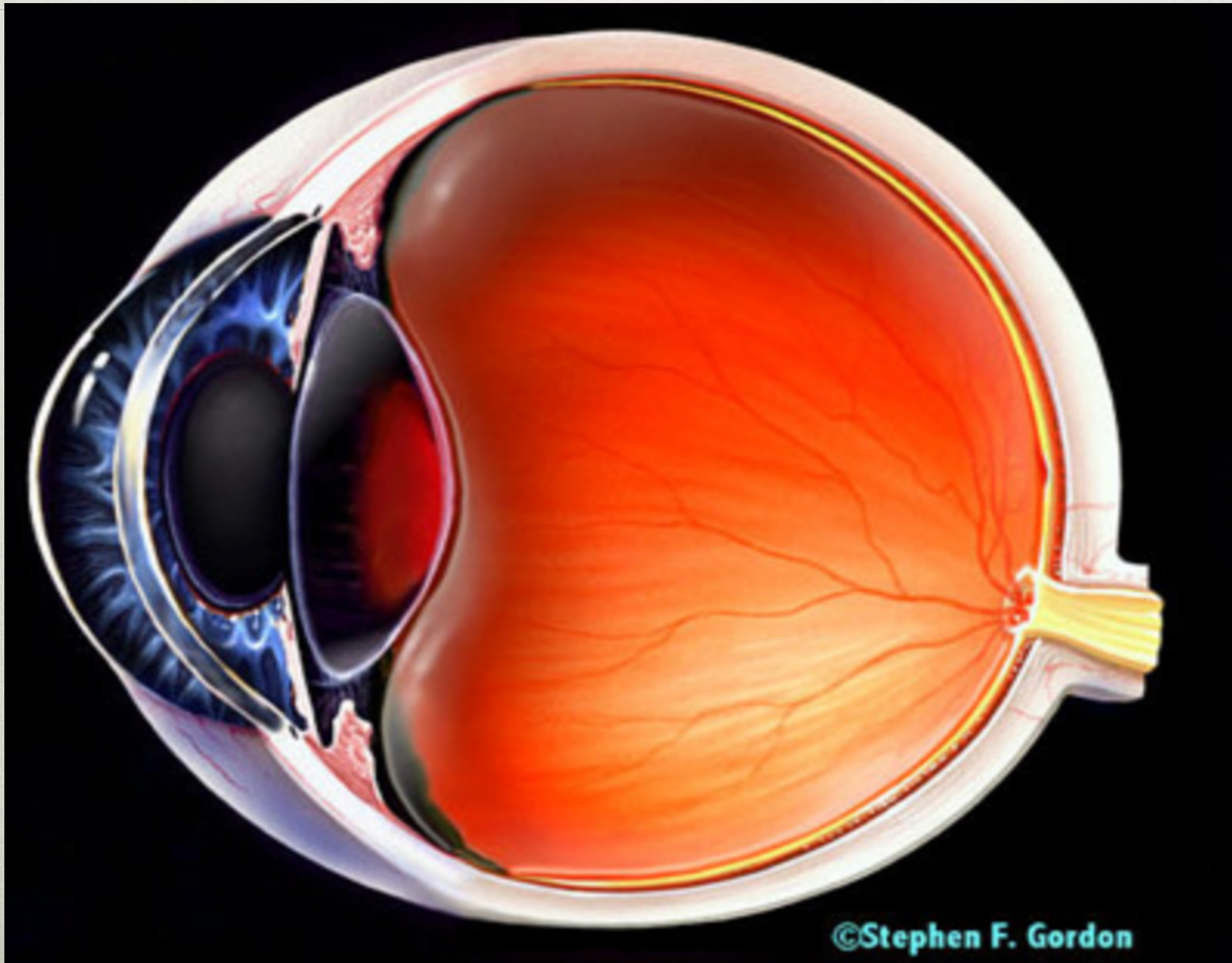


# OBSERVE





# LIGHT PATH





# HISTORY



# HISTORY

---

- Loss of vision
  - Sudden or gradual
  - Central and or peripheral
  - Unilateral or bilateral
  - Other features (added)



# HISTORY

---

- Pain
  - Sharp prickly (Surface)
  - Dull ache (Inflammation)
  - Photophobia (Inflammation or surface)
  - On movement



# HISTORY

---

- Other common complaints
  - Grittiness
  - Itching
  - Discharge
  - Watering



# THINGS YOU MUST ASK

---

- Contact lens wear (Ulcer)
- Surgery (Endophthalmitis)
- Diabetes
- Previous problems



IF YOU HEAR THE  
SOUND OF HOOVES....



# THE HORSES

---

- Blepharitis and dry eye
- Conjunctivitis
- Cataract



# HOW DO PATIENTS MISS THEIR BLINDNESS?

---

- Most of what we see is blurred black and white, double and vanishes when we move our eyes.



# A FREE TEST

---

- I M T D S N I N V U



# A FREE TEST

---

• I M T D S N I N V U



# A FREE TEST

---

- I M T D S N I N V U



# A FREE TEST

---

- I M T D S N I N V U



# PHYSIOLOGICAL DIPLOPIA

---

**X**



# DIY AND THE EYE!





# EXAMINATION



# VISION AND PUPILS

---

- Distance and Near, Pin Hole  
(Which spectacles?)
- Red reflex
- RAPD



# LONG SIGHT AND SHORT SIGHT

---





H

A L

T N C

O L H A

E C T N O

C L O H N A

A E L O H C T

H T N E L A C O

A E C O H N T L

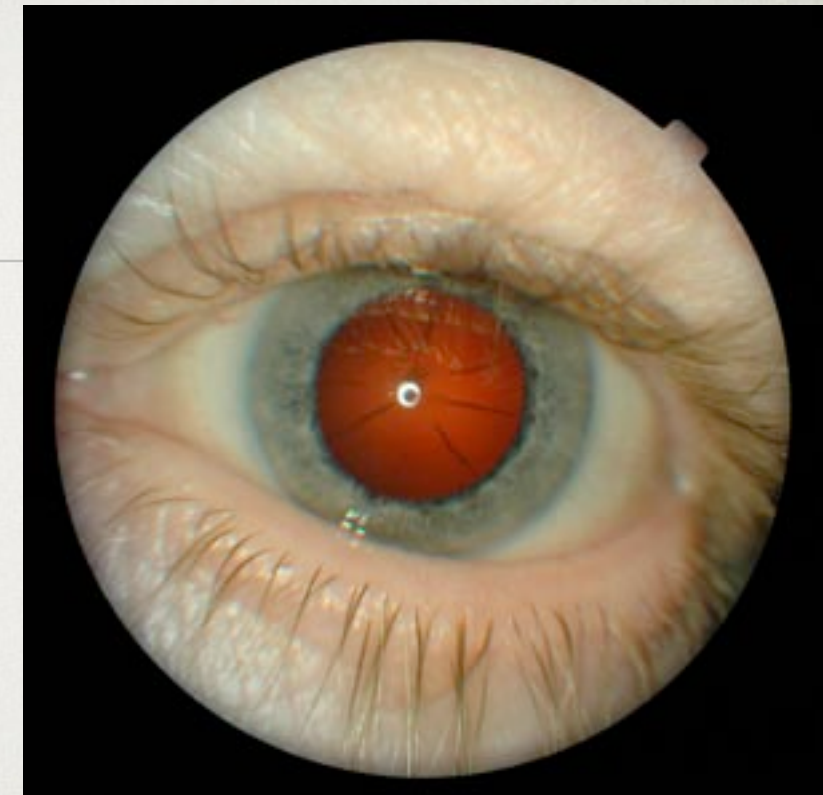


# RED REFLEX

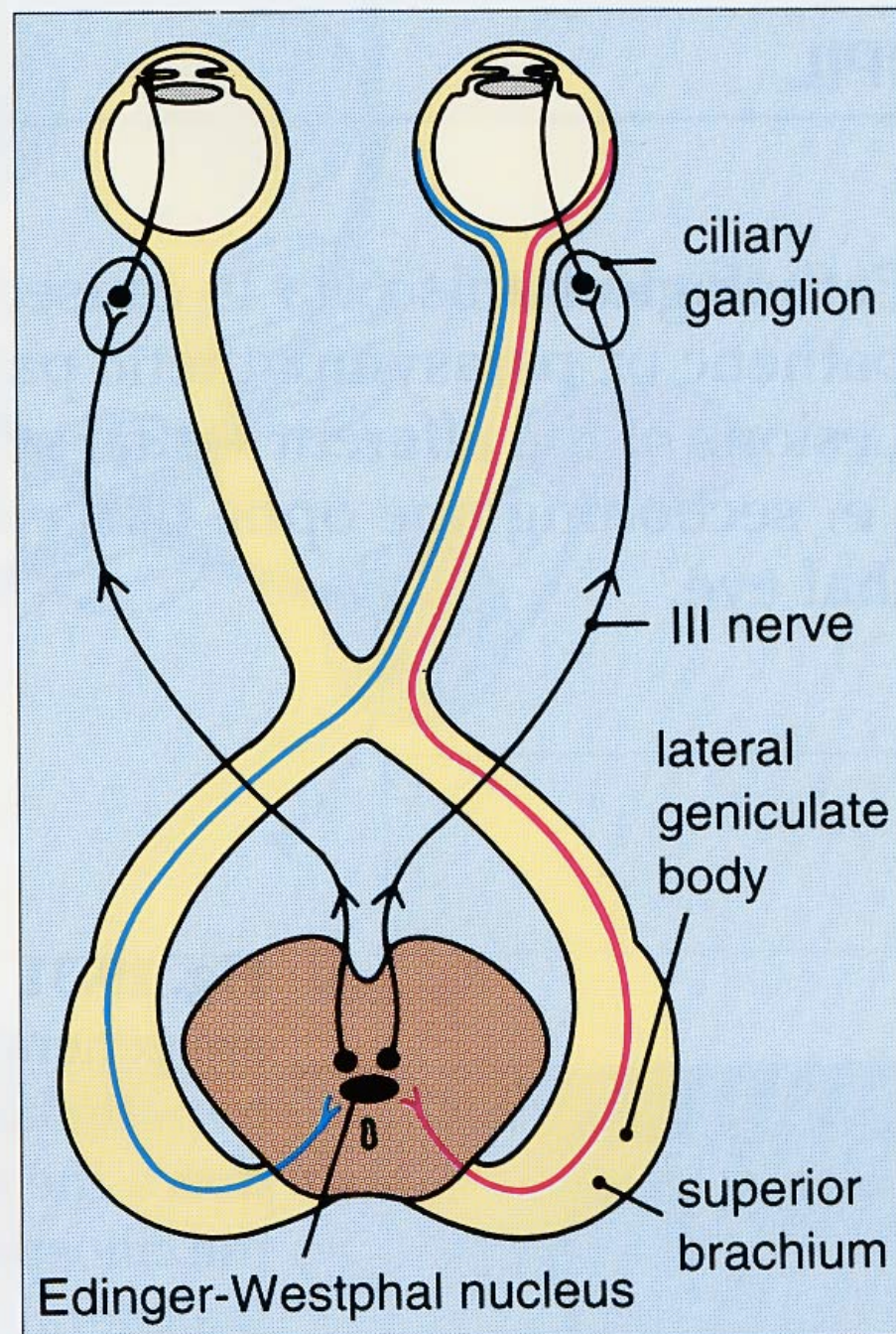
---

- Quality of optical media from cornea to retina









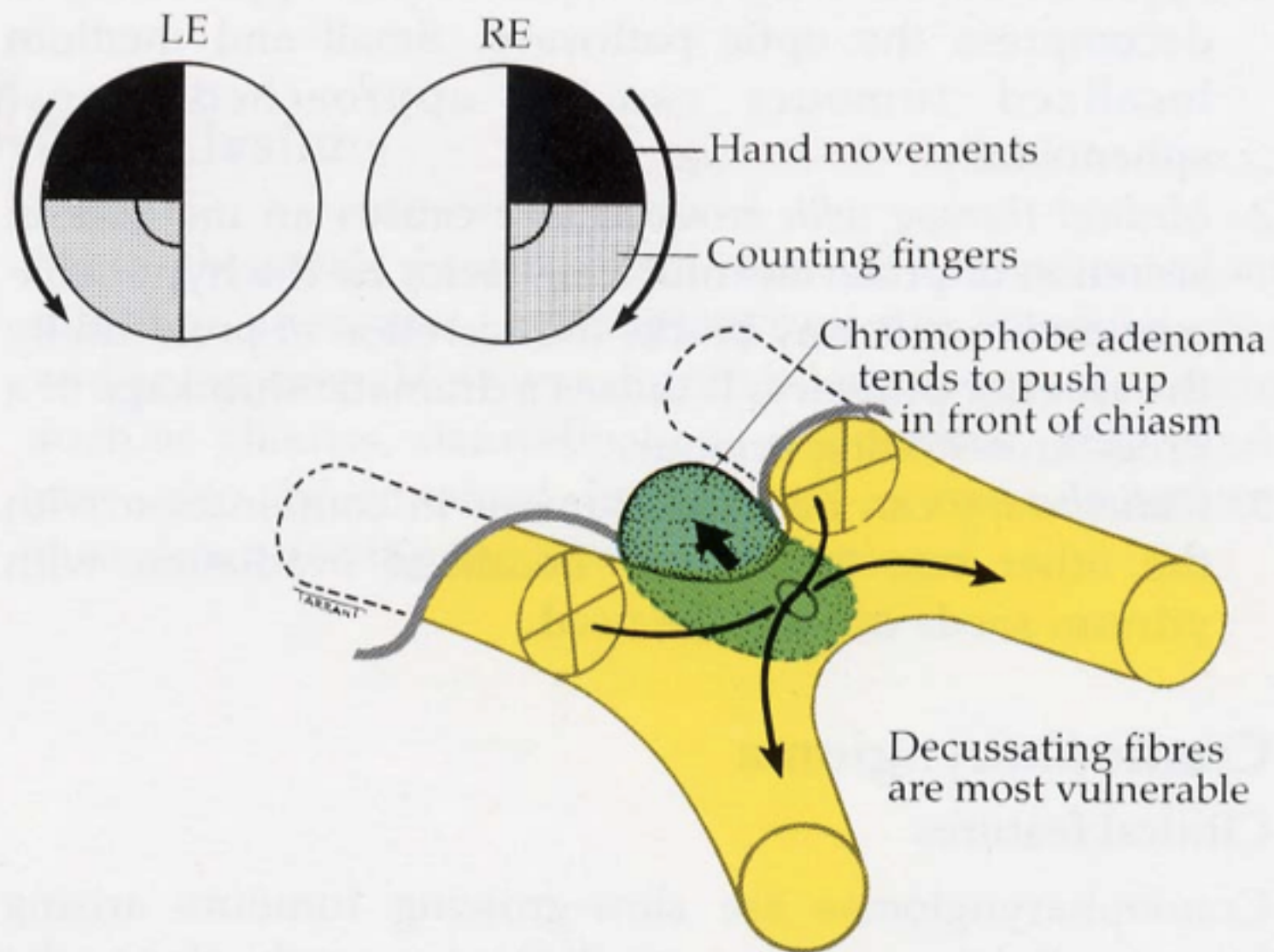


# FIELDS AND COLOUR

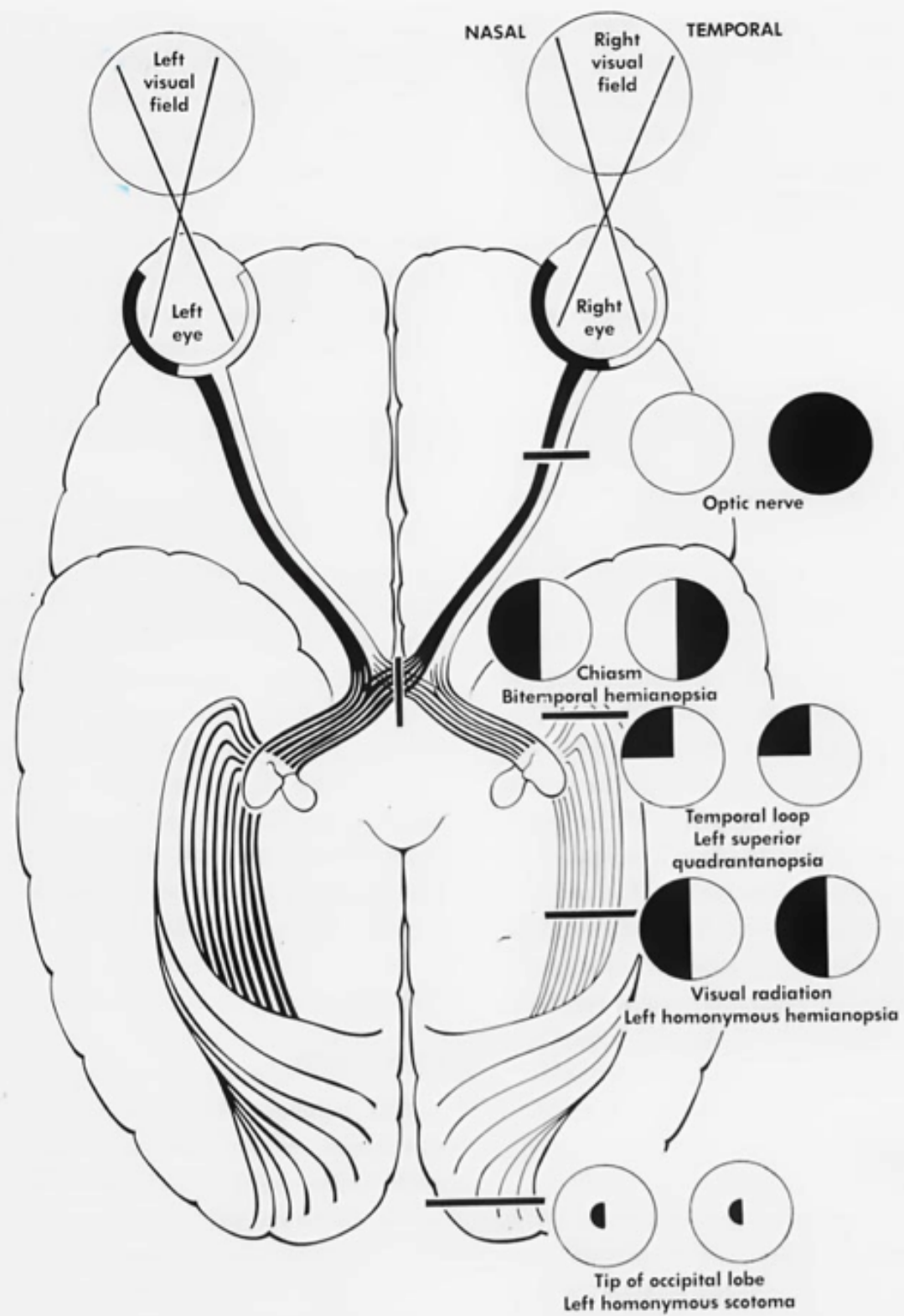
---

- Fields to confrontation
- Colour (Red desaturation)











# OPHTHALMOSCOPY

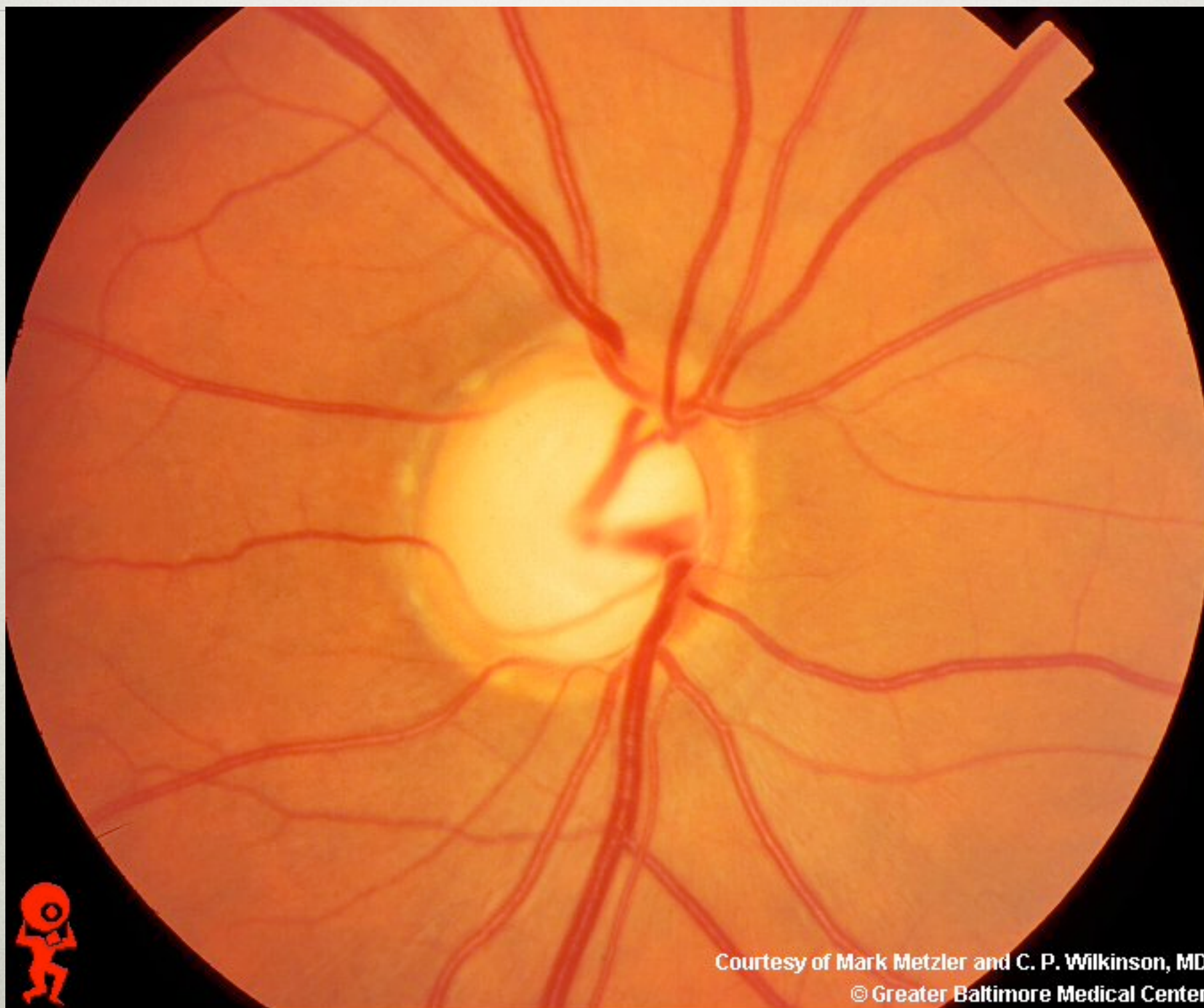


# OPHTHALMOSCOPY

---

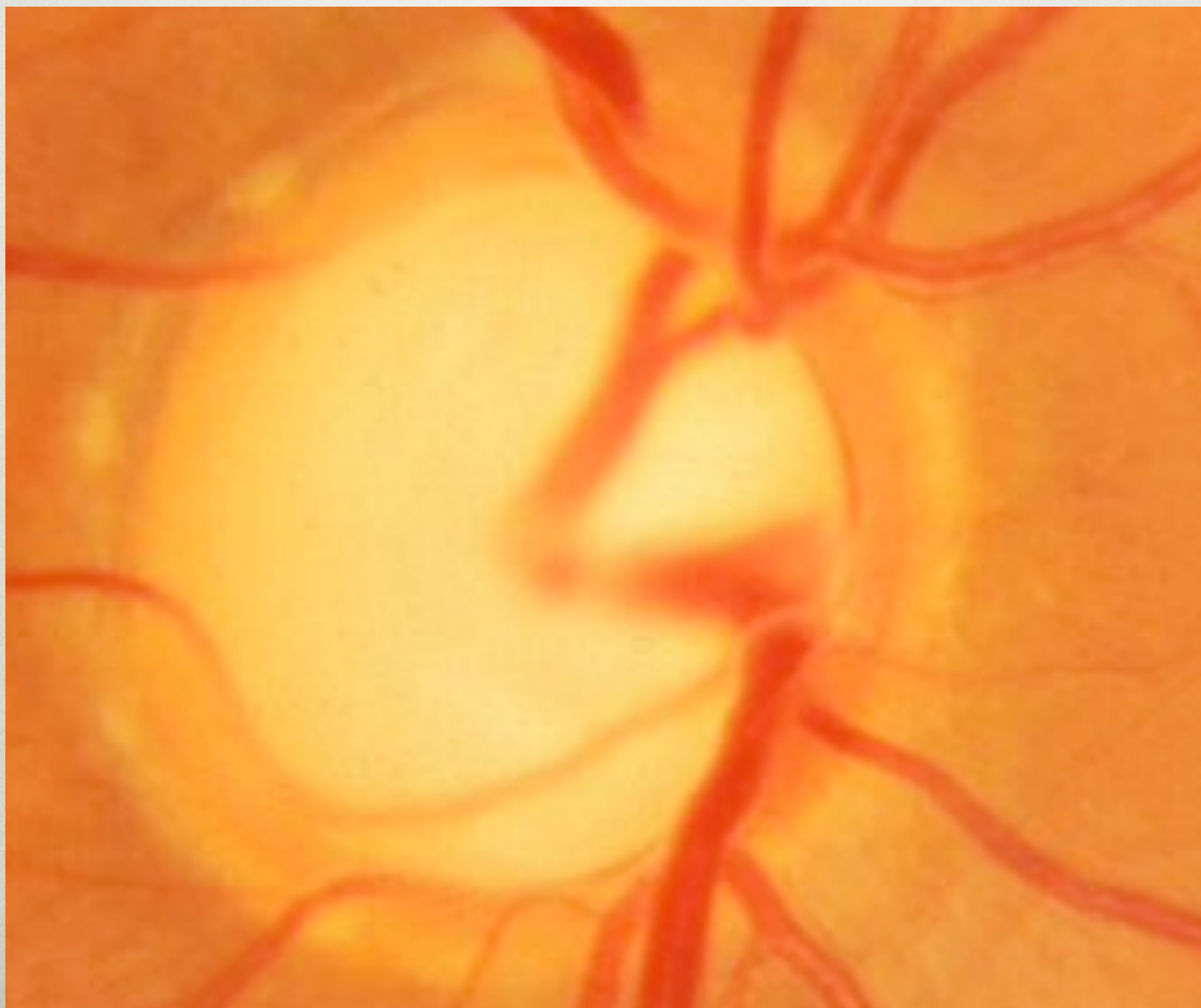
- Red reflex
- Anterior
- Journey through the eye
- Posterior
  - disc (cup colour contour)
  - Vessels
  - 4 Quadrants
  - Fovea





Courtesy of Mark Metzler and C. P. Wilkinson, MD  
© Greater Baltimore Medical Center







# LIMITATIONS

---

- Stereopsis



# TOP TIPS

---

- Close
- Dilate Tropicamide 1% ideal



# CORAL SNAKES AND KING SNAKES











# SOME TIPS

---

- Careful history
- Vision Distance / near / pinhole
- RAPD
- Red reflex



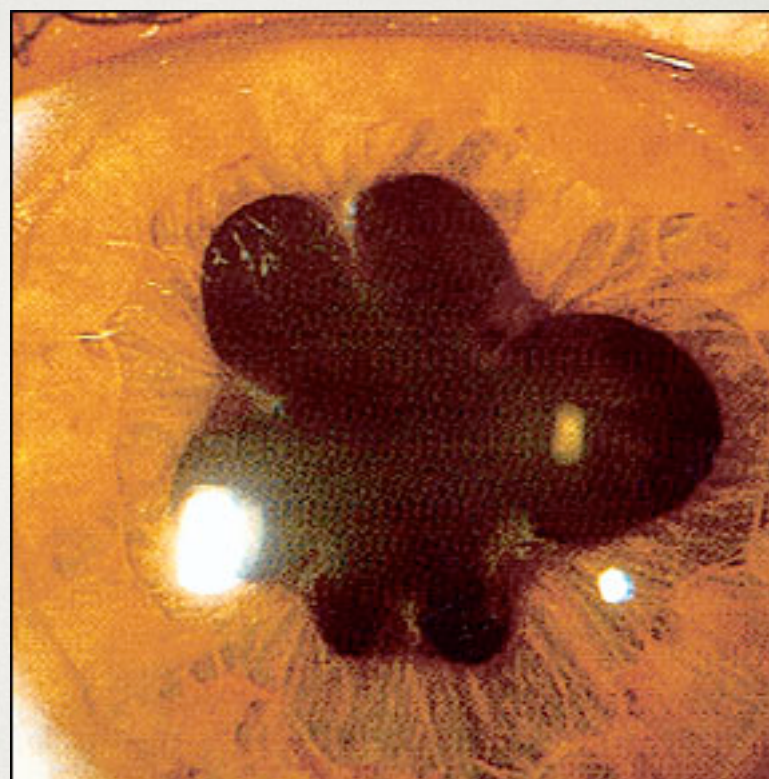
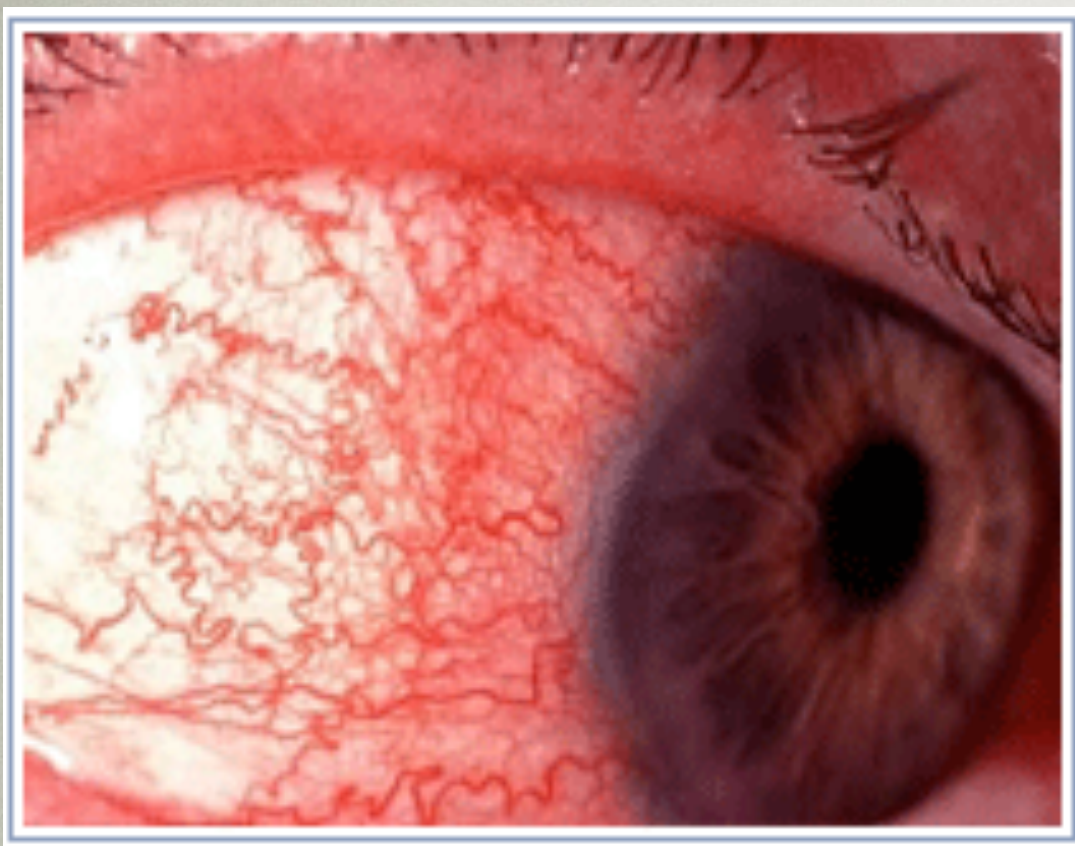
# RED EYE

## IRITIS V CONJUNCTIVITIS

---

- History
  - Pain dull ache (light / accommodation)
  - Violaceous Hue circum-corneal
  - No discharge





Courtesy of John D. Gottsch, MD  
©1988 Wilmer Eye Institute



# ANGLE CLOSURE GLAUCOMA V CONJUNCTIVITIS

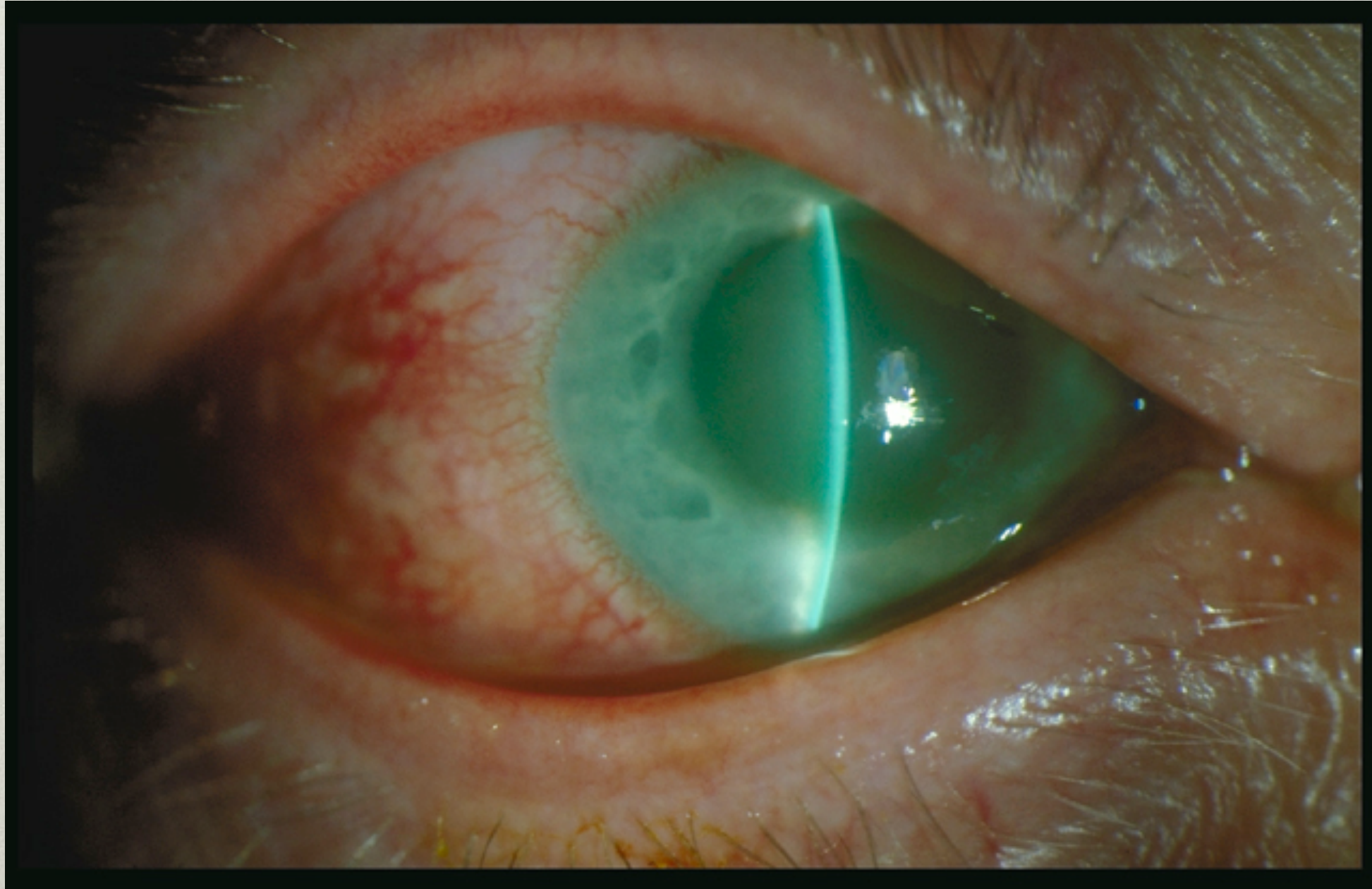
---

- Severe pain and nausea
- Loss of vision
- Unreactive pupil



# ANGLE CLOSURE GLAUCOMA V CONJUNCTIVITIS

---





# CORNEAL ULCER V CONJUNCTIVITIS

---

- Severe pain
- Loss of vision
- History of contact lens wear



# CORNEAL ULCER V CONJUNCTIVITIS

---



Courtesy of Harold R. Katz, MD and Brian J. Lutman, CRA  
©1997 Sinai Hospital, Baltimore, MD



# HSV v CONJUNCTIVITIS

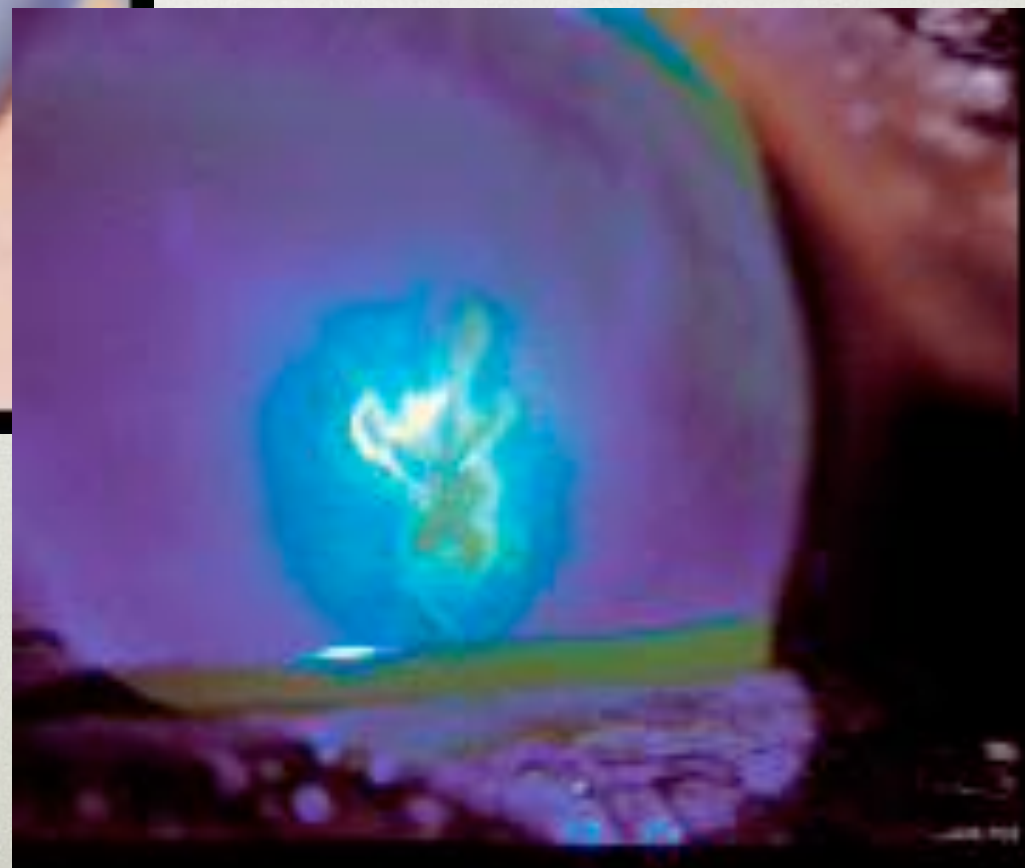
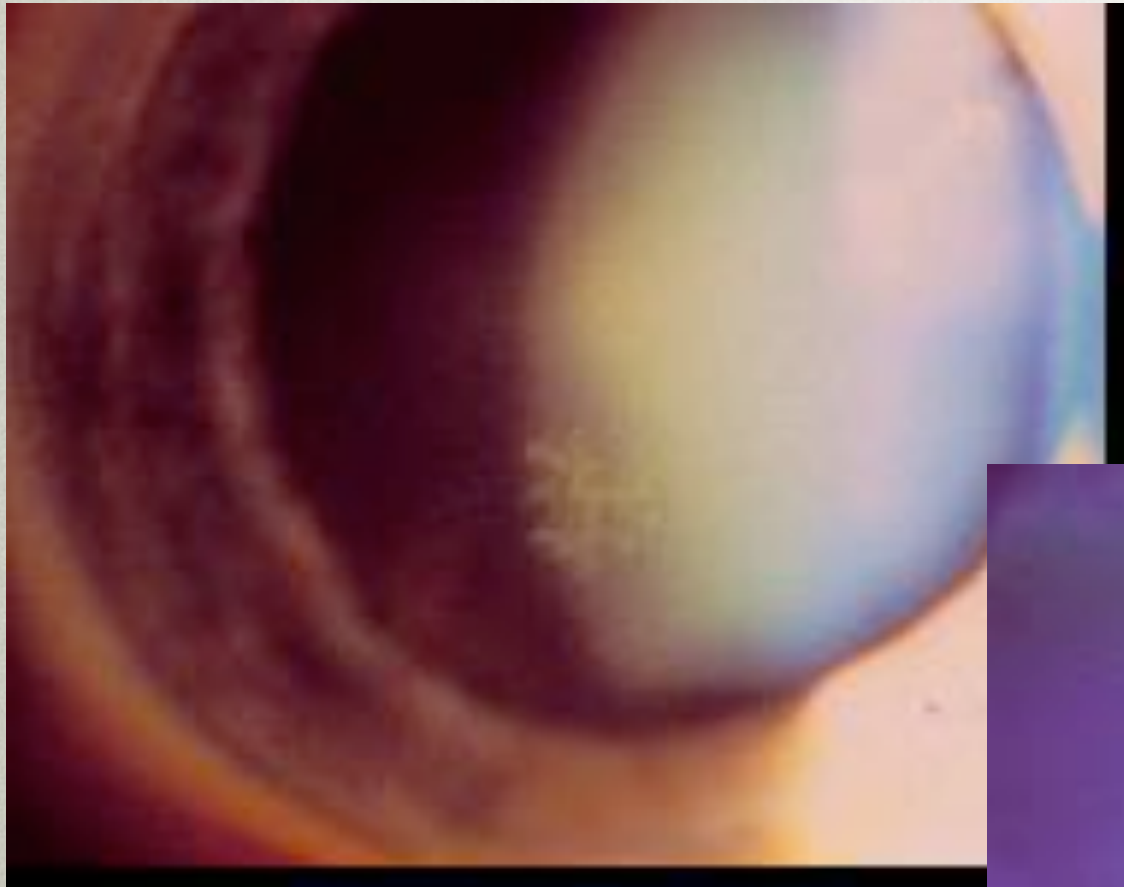
---

- History of cold sores
- History of 'eye ulcers'
- Red and watering, photophobic



# HERPES SIMPLEX KERATITIS

---





# SAFETY NETS

---

- Worry
  - Contact lenses
  - Loss of vision
  - Severe pain / dull ache
  - Previous History



# RETINAL DETACHMENT V

## MIGRAINE

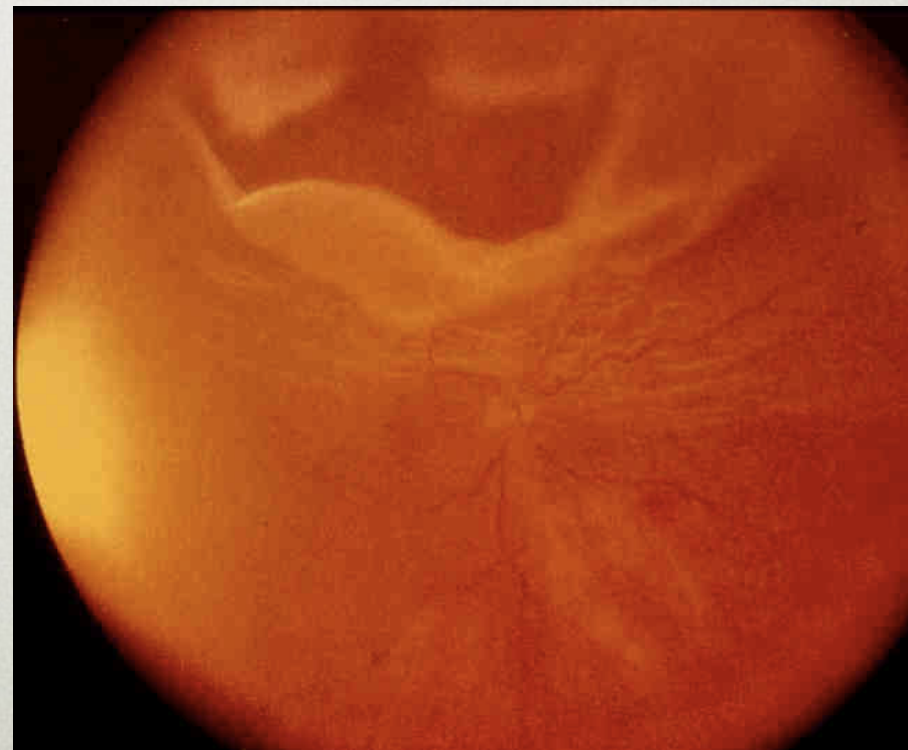
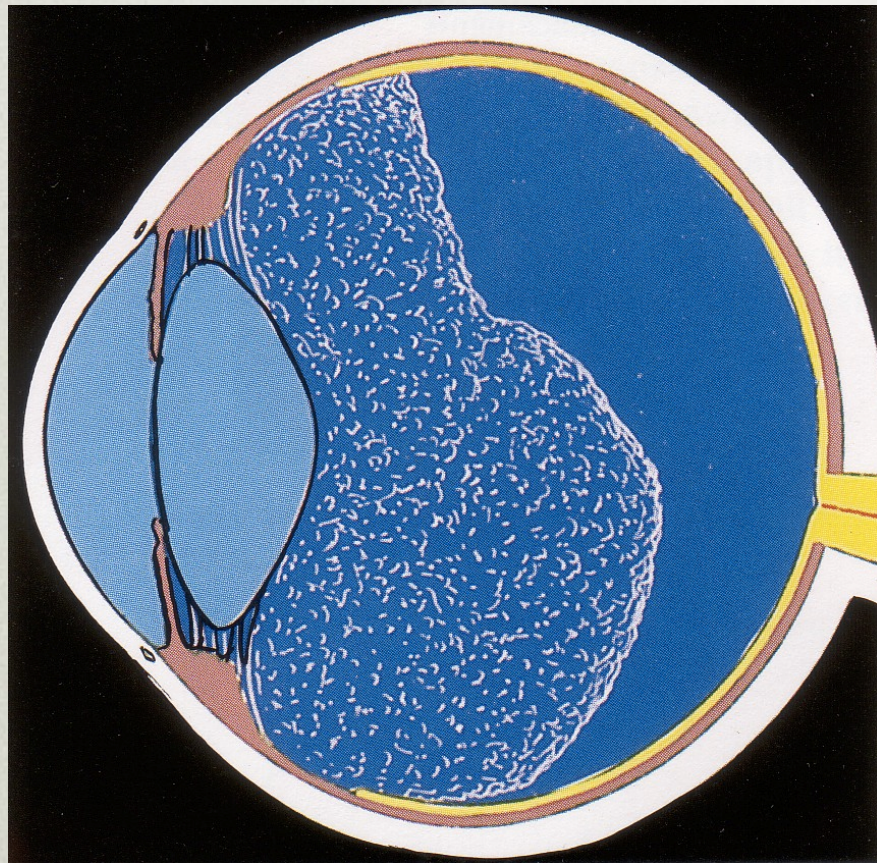
---

- Monocular symptoms
- Flashes and Floaters
- Not time limited but progressive



# PVD AND RETINAL TEAR

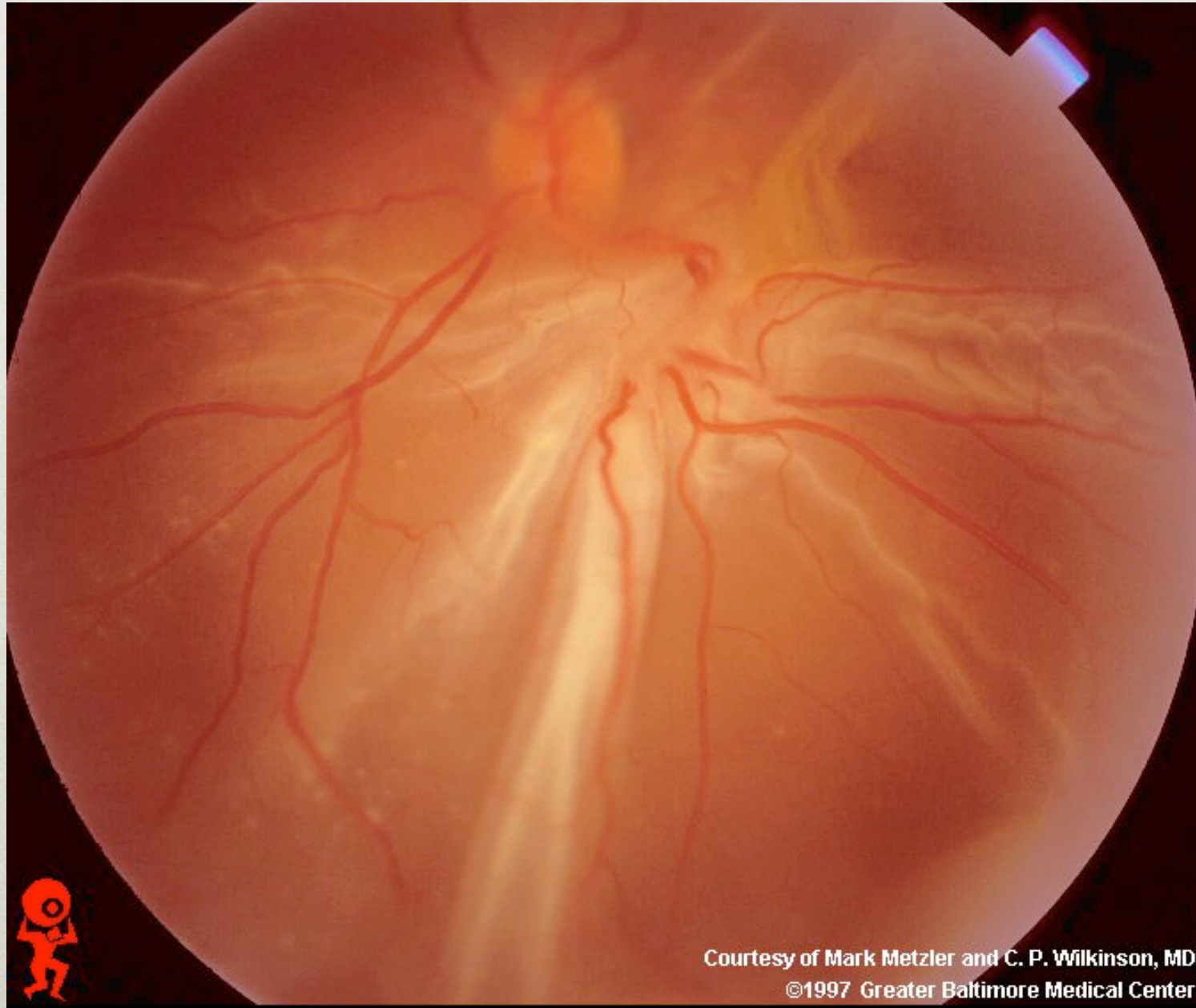
---





# RETINAL DETACHMENT

---





# THE CLINIC



MRS B

52



# MY EYES ARE SORE

---

- What will you ask?
- What will you look for?



# BLEPHARITIS

---



Courtesy of Harold R. Katz, MD and Brian J. Lutman, CRA  
©1996 Sinai Hospital, Baltimore, MD



# MANAGEMENT

---

- Lid Hygiene
- Artificial tears
- Chloramphenicol ointment?
- Doxycycline?



MRS A

84



# MY VISION IS NOT RIGHT

---

- What will you ask?
- What will you look for?



# HORSE NUMBER 5

---



Courtesy of J. Donald Gass, MD and Timothy D. Polk, MD  
©1993 Bascom Palmer Eye Institute



# MANAGEMENT

---

- Refer to eye casualty for booked appointment



MISS O

24



# MY EYE HURTS

---

- What will you ask?
- What will you look for?



# CORNEAL ULCER

---



Courtesy of Harold R. Katz, MD and Brian J. Lutman, CRA  
©1997 Sinai Hospital, Baltimore, MD



# MANAGEMENT

---

- Refer to eye casualty



MR C

52



# I WOKE UP THIS MORNING AND CANNOT SEE

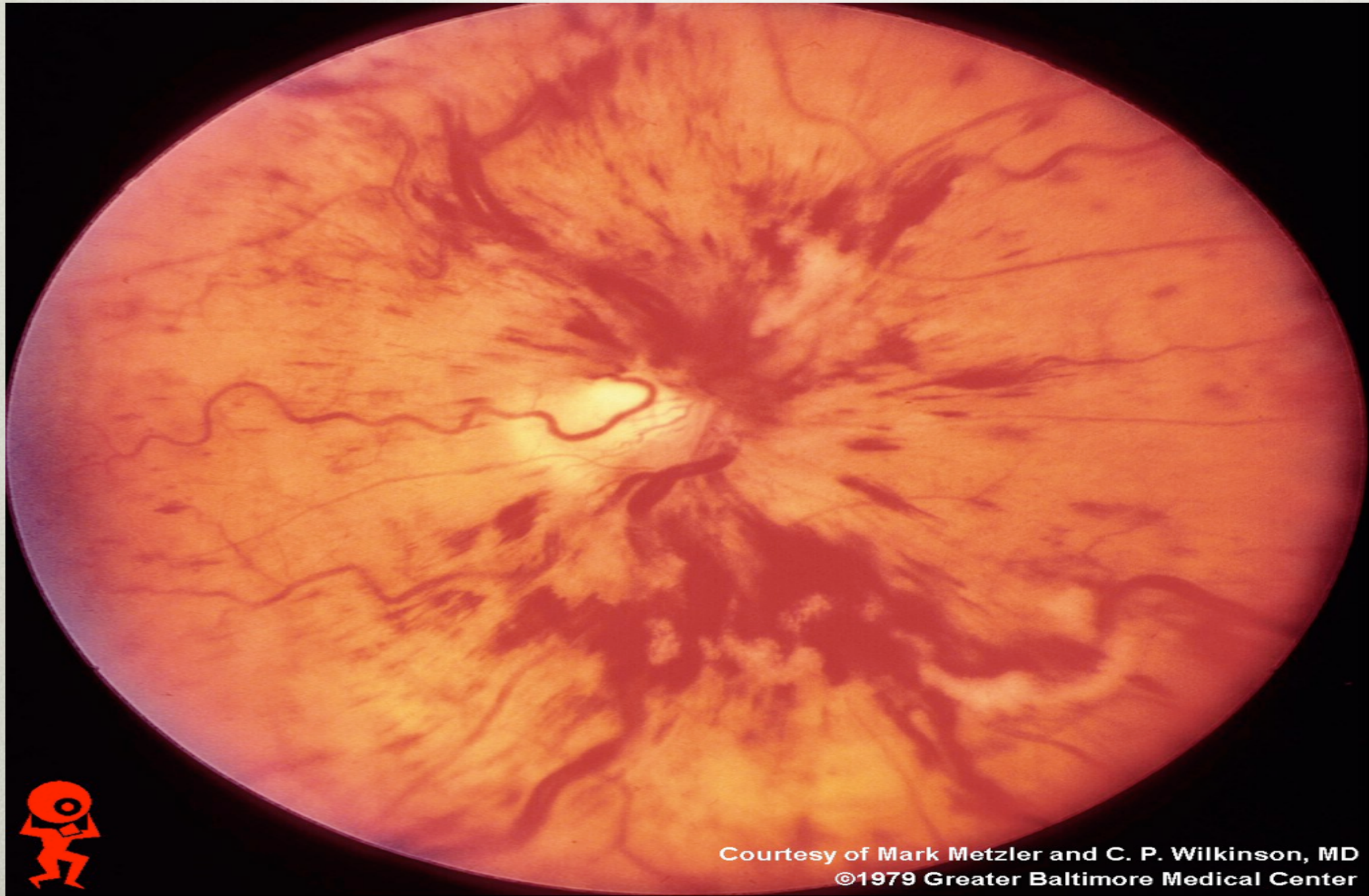
---

- What will you ask?
- What will you look for?



# HORSE NUMBER 6

---



Courtesy of Mark Metzler and C. P. Wilkinson, MD  
©1979 Greater Baltimore Medical Center



# MANAGEMENT

---

- Cardiovascular work up
- Refer to OPD soon



THANK YOU